

Classic



BONE WHITE
PVDF 2/SRI 89



ALABASTER
PVDF 2/SRI 87



OYSTER
PVDF 2/SRI 81



CASTLE GRAY
PVDF 2/SRI 56



CADET GRAY
PVDF 2/SRI 51



STATUARY BRONZE
PVDF 2/SRI 8



PATRIOT RED
PVDF 3



RED FIRE
PVDF 3/SRI 35



DUSTY CHARCOAL
PVDF 3



AZURE BLUE
PVDF 3



FOCUS BLACK II
PVDF 3/SRI 30



ANODIC CLEAR MICA
PVDF 2



PLATINUM MICA
PVDF 2/SRI 61



ANODIC SATIN MICA
PVDF 2



WEST PEWTER MICA II
PVDF 2



HARVEST GOLD MICA
PVDF 2



HAZELNUT MICA
PVDF 2/SRI 40



DRIFTWOOD MICA
PVDF 2/SRI 40



RUSSET MICA
PVDF 3/SRI 38



SILVER METALLIC
PVDF 3/SRI 58



CHAMPAGNE METALLIC
PVDF 3

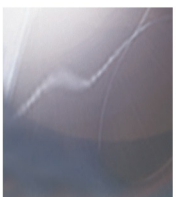


SUNRISE SILVER
METALLIC II
PVDF 3/SRI 30



BRILLIANT SILVER
METALLIC
PVDF 3/SRI 73

naturAL



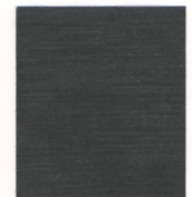
REFLECT MIRROR



BRUSHED 50



BRUSHED STAINLESS



BRUSHED CARBON

naturAL Designer Series



ZINC



RUSTED METAL

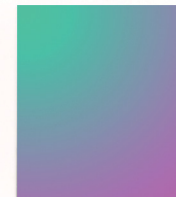
Spectra



OCEAN



CUPRAL



SAKURA

PVDF or Polyvinylidene Fluoride Finish systems are the industry standard for metal architectural coatings. The **SRI** or **Solar Reflectance Index** with cool paint technology is a measure of a finish's ability to reject solar heat, as shown by a small temperature rise. It is defined so that a standard black (reflectance 0.05, emittance 0.90) is zero and a standard white (reflectance 0.80, emittance 0.90) is 100. SRI values are subject to change based on paint supplier and availability. **Please contact Customer Service for the most accurate listings as well as stocking of naturAL series and Spectra colors.**

FINISH SYSTEMS

Alucobond® Cool Systems are created utilizing a color and a **Classic** PVDF (Polyvinylidene Fluoride) finish system. When requesting a color, we will provide you with the resin type, the number of coats, the color name and the gloss level. **Alucobond naturAL** colors amplify the natural beauty and character of many natural elements to enhance the design of your architectural project while maintaining the durability and lightweight properties of aluminum. **Alucobond Spectra** colors use high-quality fluorocarbon paint systems applied in a continuous coil-coated process to create a color-shifting surface. Depending on the pigment type and viewing angle, different wave-lengths of light are reflected, resulting in an ever-changing color gradient with iridescent highlights. Now, your entryways, columns, and facades can make a bold statement without upsetting your budget.

WARRANTIES

For warranty information please contact your Alucobond representative.

PHYSICAL PROPERTIES

Alucobond Composition

- › Aluminum interior and exterior facings in 0.020" nominal thickness to ensure flatness
- › Polyethylene (PE) core available in 3mm, 4mm and 6mm nominal thickness
- › Proprietary fire-retardant (Plus) core available in 4mm nominal thickness only

Sheet Widths

- › Standard coil coated widths include 50" and 62"
- › Standard anodized widths include 62"
- › Custom width 40"

Sheet Lengths

- › Standard lengths include 146" and 196"
- › Custom lengths for coil coating up to a maximum of 360"
- › Custom lengths for anodized up to a maximum of 216"

Minimum Bending Radius

- › The minimum bending radius of Alucobond PE and Alucobond Plus without routing the interior skin is 15 times the thickness of the material

Available Finishes

- › PVDF, FEVE
- › Polyester
- › HDP
- › Anodized: Clear, Light Bronze, Medium Bronze, Dark Bronze and Black
- › Monochromatics, Micas and Metallics
- › naturAL
- › Spectra

TECHNICAL DATA

	Alucobond Plus
Thickness	4mm Plus
Nominal Weight (lbs/sq.ft)	1.56
Coefficient of Expansion x10 ⁻⁵ (in./in.°F)	1.11
Temperature Resistance	-55° to 175° F (-48° to 80°C)
Minimum Peel Strength	115 N mm/mm

Tests and Building Codes

Guided by the most comprehensive technical support team in the industry, Alucobond maintains constant and rigorous code compliance. From conceptual vision to finished project, the Alucobond sales and service professionals will guide you through the process.

North American Building Code Acceptance

Alucobond and Alucobond Plus are accepted by many code regulatory bodies including:

- › IBC
- › Miami-Dade County, Florida
- › National Building Code of Canada
- › State of Florida
- › City of Los Angeles, California

Alucobond Code Tests

Alucobond has been tested in accordance with the following standards:

- › ASTM E 84 – Surface burning characteristics
- › ASTM D1929 – Ignition properties
- › ASTM D1781 – Peel strength
- › NFPA 285 – Intermediate scale multi-story (Alucobond Plus only)
- › CAN/ULC-S134 (Alucobond Plus only)

CUSTOM COLOR

Don't see what you are looking for? Let your imagination be our guide! The palette of coil-coated colors can be endless. Our color matching experts will work to match your color. Custom colors are available but require a 1,000 sqft. minimum order and are subject to set-up charges. Exact matches are sometimes not possible. Matching a color created by a spray method, particularly a metallic, may not match with a color created on a roll coated method.

To ensure that we identify your color correctly, we require either:
A hand sample of at least 1" x 1", **or** a Pantone® color reference, which can be noted as a number with a "C" for coated or "U" for uncoated.
Example: Pantone 220C, **or** a PPG paint code reference.

Send the color sample to:

Alucobond Custom Color Match Department
208 West Fifth Street
Benton, KY 42025

Please provide your name, company name, address, phone number and email address, as well as the project name, project location, type of finish and gloss. We will update the progress of your custom color request via email.

 REYNOBOND®

Colorchart



ARCHITECTURE STANDARD FINISHES

Bold Ideas Require Bold Finishes



In the architecture and building market, nothing's more important than a bold idea being implemented successfully. That's why around the world, architects rely on Reynobond® and Reynolux® panels to amplify the visual impact of their ideas. Offering long-term, cost-effective, consistent solutions, these panels are durable, weather resistant, lightweight, flexible, and easy to fabricate and maintain. They're available in a nearly limitless array of stock and custom finish options.

Use this color chart for a closer look at our standard color offerings (stocked as Reynobond panel inventory, pre-finished coil* and 0.40" Reynolux flat sheet), and envision a world of possibilities for making your next bold idea even bolder. Plus, if you don't immediately see the color you need, our custom color matching will get you exactly where you need to be.

Colorweld® 500/500XL Finishes

High-performing, coil-coated Colorweld 500 and Colorweld 500XL finishes allow color matching at the highest uniformity and quality. They feature 70% Kynar 500®/Hylar 5000® polyvinylidene fluoride (PVDF) resins with fluoropolymer technology, providing excellent flexibility and film adhesion for forming, with superior resistance to humidity, impact, salt spray, pollution and abrasion. With a 30-year finish warranty, they're considered the premier architectural coatings for metal. And, because Colorweld 500XL finishes are compatible with PPG's DURAPREP® Prep™ 400 graffiti remover system, your designs can be protected from graffiti and vandalism in any environment.

Design Line™ Nature-Inspired Finishes

Inspired by Mother Nature, our Design Line finish system offers a variety of striking, natural-material-based design choices that feature all the benefits of Reynobond aluminum composite material. These 3-coat advanced polymer coatings resist sun, extreme temperatures and even saltwater, making them ideal for outdoor applications.

PrismFX™ Color-Shifting Finishes

PrismFX finishes can give your building a look as dynamic as your design. This 3-coat innovative coating creates subtle color shifts in different lighting conditions when viewed from different angles, so a building that appears green, blue or silver in the morning can shift to copper, violet or gold in the afternoon. Excellent flexibility and film adhesion for forming are delivered by this high-performance paint system, while also being resistant to humidity, impact, salt spray, pollution and abrasion, making it suitable for all outdoor architectural applications and a wide range of other specialty uses.

Natural Metal Offerings

Our natural metal composite panels give you all the functional benefits of Reynobond panels along with the aesthetic impact that can only come from nature's finest elements. Our brushed aluminum and stainless steel give you bold options for interior and exterior walls and accents, while allowing you to incorporate curves, angles and other design elements not possible with heavy plate and sheet.

Stay Up to Date on Stock

Visit reynobond.com/stockinglist for our current listing of standard color offerings. Check back often as we adjust our finishes and sizes to meet your demands.

Custom Color Matching Services

Don't see the color you're looking for? We can help match any color you desire. Email your custom color match request to color.matching@arconic.com and see the possibilities of high-performing color matches for Reynobond and Reynolux panels.

Request a Sample

To receive a sample of any of the finishes shown within this booklet, please call 800.841.7774 and ask for our Sample & Literature Department. If you prefer, you can email your request to samples.literature@arconic.com.

*Used to produce Reynobond panels

Colorweld® 500


30-year warranty
AAMA 2605

SERIES ONE

Standard Solid Finishes

All Colorweld 500 Series One finishes, with the exception of Eastman Blue, are stocked in 62"-wide coil and are available in 0.040" x 48" Reynolux flat sheet.




Bone White 
25-35*
68.7¹, 82², 74³




Brite Red 
25-35*
39.4¹, 42², 10³




Cadet Gray 
25-35*
35¹, 36², 34³



Castle Gray 
25-35*
49.4¹, 56², 41³




Pueblo Tan 
25-35*
51.7¹, 60², 48³



Deep Black
20-30*
4.5¹, 0², 5³




Frisco White 
25-35*
69.1¹, 83², 75³



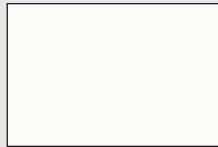
Eastman Blue
45-55*
37¹, 36.2², 17³



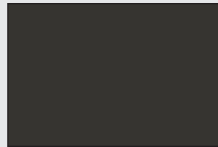
Oyster White 
25-35*
67.4¹, 81², 67³



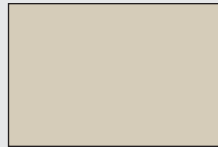
Classic Bronze
20-30*
9.8¹, 2², 7³



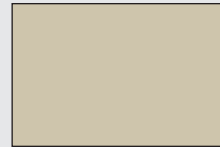
Pure White
25-35*
69.4¹, 83², 75³



Charcoal
25-35*
28.6¹, 28², 8³



Limestone
25-35*
66¹, 56.5², 73.99³



Sandstone
25-35*
82¹, 68.6², 73.7³

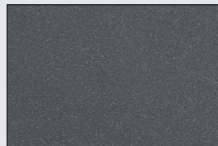
Colorweld® 500

30-year warranty
AAMA 2605

SERIES TWO

Premium Mica Finishes

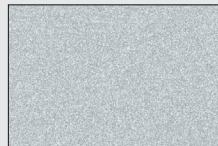
All Colorweld 500 Series Two finishes are stocked in 62"-wide coil and are available in 0.040" x 48" Reynolux flat sheet.




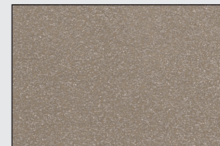
Pewter
15-25*
14.6¹, 10², 19³



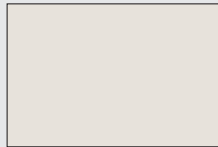
Platinum 
20-30*
59.3¹, 70², 57³



Silversmith 
15-30*
58.1¹, 68², 52³



Vancouver Copper 
15-25*
47.4¹, 53², 28³



Daybreak Mica
15-25*
35.9¹, 38², 38³



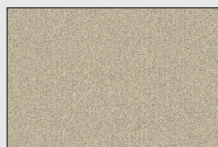
Medium Bronze
15-25*
63¹, 75², 57³




Champagne Mica
15-25*
29.5¹, 30², 21³




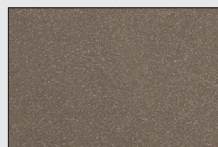
Driftwood Mica
15-25*
9.2¹, 3², 7³




Anodic Satin 
20-30*
53.6¹, 61², 39³



Anodic Clear 
20-30*
56.2¹, 65², 54³



Anodic Bronze 
15-25*
42.9¹, 47², 23³

Anodic finishes are formulated to closely resemble popular anodized colors used on curtain wall profiles.

Colorweld® 500XL

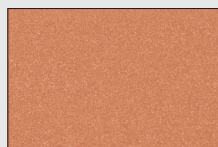
30-year warranty
AAMA 2605


SERIES THREE

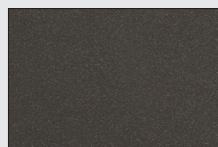
Premium 3-coat
Metallic Finishes

Compatible with PPG's
DURAPREP® Prep™ 400
graffiti-resistant coating.

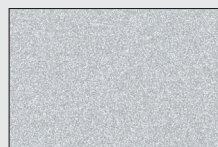
All Colorweld 500XL Series Three finishes are stocked in 62"-wide coil and are available in 0.040" x 48" Reynolux flat sheet.




Copper Penny 
25-35*
44.4¹, 48², 24³




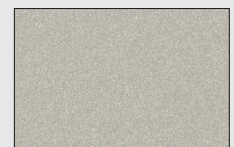
Nightfall Metallic 
20-30*
11.1¹, 2², 8³




Bright Silver Metallic 
15-30*
61¹, 70², 61³



Champagne Metallic 
25-35*
54.3¹, 61², 52³



Titanium 
25-35*
44.2¹, 47², 44³

 Environment-friendly cool-pigment finish.
* Specular Gloss Reading

¹ Solar Reflectivity Value (SRV); ASTM C1549

² Solar Reflective Index (SRI); ASTM E1980

³ Light Reflectance Value (LRV); ASTM E1477

reynobond.com
reynobond.com/stockinglist

PrismFX™

(Duragloss® PFX)
Premium Finishes

20-year warranty
AAMA 2604



Indian Summer



Silver Gold



Spring Lake

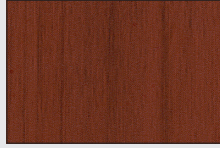
Design Line™

(Duragloss® DL)

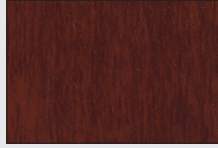
20-year warranty
AAMA 2604

WOOD

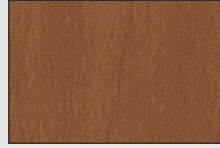
Premium Finishes



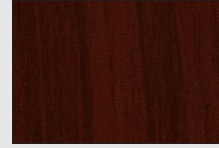
Colonial Red



Embala Brown



Italian Walnut



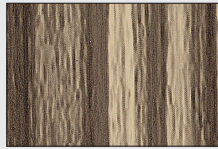
Mahogany Brown



Scottish Oak



Sunny Pear



Zebra

MINERAL

Premium Finishes



Terra di Siena



Terra Cotta Mineral

PATINA

Premium Finishes



Copper Patina



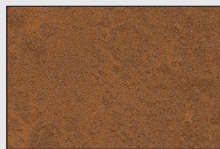
Rust Patina



Zinc Patina

STONE

Premium Finishes



Aciero Corten

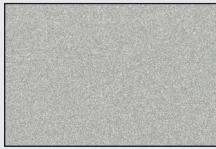


Apollo Stone

Natural Metals

Premium Metals

The appearance of our Natural Metals may vary with the lot of production.



Stainless Steel



Anodized

Premium Coating

The appearance of our Anodized panels may vary with the lot of production.



Clear Anodized

Colorweld® LF (Clear Coat)

20-year warranty

Compatible with PPG's DURA-PREP® Prep™ 400 graffiti-resistant coating.

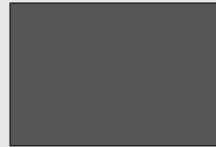
The appearance of our Colorweld LF finishes may vary with lot of production.



Long Brushed Aluminum 30*



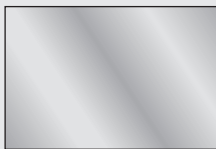
Natural Brushed Aluminum 30*



Natural Brushed Aluminum Gray 30*

Colorweld® Brite (Clear Coat)

10-year reflection warranty



Brite Mirror
87% Reflectivity

Finish Performance Properties

Property	Test Method	Colorweld® 500 Opaque/ Mica	Colorweld® 500 XL Metallic	Duragloss® PFX (PrismFX™)	Duragloss® DL (Design Line™)	Colorweld® LF
Specular Gloss (60)	ASTM D523	15-35	25-35	20-60	20-60	<10-80
Gloss Retention	ASTM D523	N/A	N/A	N/A	N/A	20 yrs FLA >80%
Pencil/Film Hardness	ASTM D3363	F-2H	F-2H	F min	F min	F-2H
Coating Flexibility (T-bend)	ASTM D4145	1-T to 2-T; No pick off	1-T to 2-T; No pick off	1-T to 2-T; No pick off	1-T to 2-T; No pick off	1-T to 2-T; No pick off
Reverse Impact (1.5 thickness)	ASTM B2794	Passes	Passes	Passes	Passes	Passes
Salt Spray Resistance 5% Salt Fog @ 95° F	ASTM B117	Passes 4000 hrs	Passes 4000 hrs	Passes 3000 hrs	Passes 3000 hrs	Passes 4000 hrs
Humidity Resistance 100% RH @ 100° F	ASTM D2247	Passes 4000 hrs	Passes 4000 hrs	Passes 1000 hrs	Passes 1000 hrs	Passes 4000 hrs
Color Retention @ 45°, South Florida	ASTM D2244	10 years, Max 5 fade	10 years, Max 5 fade	5 years, Max 5 fade	5 years, Max 5 fade	10 years, Max 5 fade
Chalk Resistance @ 45°, South Florida	ASTM D4214	10 years, >8 chalk	10 years, >8 chalk	5 years, >8 chalk	5 years, >8 chalk	N/A
Film Thickness	ASTM D1400	0.2 mil primer 0.8 mil top coat	0.2 mil primer 0.8 mil color coat 0.5 mil clear coat	0.6 mil primer 0.8 mil base coat 0.7 mil top coat	0.6 mil primer 0.8 mil base coat 0.7 mil top coat	0.6-0.7 mil clear coat

Disclaimer:

Laws and building and safety codes governing the design and use of AAP's products, and specifically aluminum composite materials, vary widely. It is the responsibility of the owner, the architect, the general contractor, the installer and the fabricator/transformer, consistent with their roles, to determine the appropriate materials for a project in strict conformity to all applicable national, regional and local building codes and regulations. REYNOBOND IS COMBUSTIBLE; IT COULD CATCH FIRE AND BURN. SEE AAP WEBSITE FOR PRODUCT WARNINGS. ANY LABORATORY TESTING INFORMATION PROVIDED BY AAP APPLIES ONLY TO THE PARTICULAR PRODUCT OR ASSEMBLY TESTED AND DOES NOT NECESSARILY REPRESENT HOW PRODUCTS WILL ACTUALLY PERFORM IN USE.



©2017 Arconic Architectural Products LLC. Reynobond®, Reynolux®, Colorweld® and Duragloss® are registered trademarks and Design Line™ and PrismFX™ are trademarks of Arconic Inc. Kynar 500® is a registered trademark of Arkema Group. Hylar 5000® is a registered trademark of Solvay Solexis. DuraPrep® is a registered trademark and Prep™ is a trademark of PPG Architectural Finishes, Inc.

17AAP1357-A Apr 2017 ver. 2

Arconic Architectural Products LLC

50 Industrial Boulevard

Eastman, GA 31023-4129

Tel. 800 841 7774

reynobond.com or reynolux.com

Choose ALPOLIC® performance to make your project practical and durable. Choose ALPOLIC® finishes and colors to make it truly remarkable.

We offer an extensive selection of rich, vibrant colors and styles for both painted and natural metal surfaces, working with you to bring your design intent to reality. Rigid, lightweight panels that fulfill your vision with a finish of enduring quality – that’s the beauty of ALPOLIC® materials.

Browse our offerings, and let’s build.

Architectural Stock Finishes and Colors

STOCK painted colors are available on 4mm-thick panels, with many of the most popular choices stocked in a selection of widths and lengths. Specify a polyethylene (PE) or fire-resistant (fr) core – typically required by fire codes when building over 40 feet. Then choose a fluoropolymer paint finish offered in a variety of solid colors, metallics and micas. These panels are manufactured to architectural standards and stocked for immediate shipment.

ANODIZED panels are manufactured with 1100 alloy aluminum. They are available in both 50- and 62-inch widths with a stock clear anodized Class 1 finish or a choice of five custom Class 1 colors.

NATURAL METALS offer a traditional look in a state-of-the-art panel system. These 4mm panels offer your choice of metal surface while retaining the flatness and workability of aluminum composite.

Corporate Identity - Stock Program Colors

PROGRAM or 10 year finish warranty colors are stocked in the standard options shown here, or can be custom-created for your unique project. We use the advanced Lumiflon® FEVE fluoropolymer resin in two or three coats, or the Kynar® PVDF coating system to create a vivid, extremely durable finish in an astounding range of colors and glosses, including metallic and mica options. Panels are stocked in either 3mm or 4mm thickness.

Specialty Stock Colors and Finishes

STONE/TIMBER SERIES finishes are produced using our proprietary image-transfer process in concert with Lumiflon® FEVE fluoropolymer coatings, providing exceptional protection with the classic beauty of stone or timber. We stock standard 62-inch panels for your immediate needs.

PRISMATIC finishes combine Lumiflon® FEVE fluoropolymer technology with specialized pigments to create unique colors and effects. The resulting finishes can make the surface glisten or even change colors with different lighting or the movement of the sun. Consult our Prismatic brochure to find the perfect color, gloss and effect for your design.

DECORATIVE panels use specially treated aluminum surfaces with crystal-clear coats of Lumiflon® FEVE resin to protect the panels and maintain a pristine look, even in harsh exterior applications. HPA offers a polished shine, while HLZ has the look of brushed stainless steel.

MULTI-COLOR panels incorporate an advanced coating process engineered by ALPOLIC® to accommodate almost any color scheme. From bright and glossy to muted and subtle, these rich and versatile color systems can only be accomplished by combining Lumiflon® FEVE technology with our advanced die coil coating system. We can work with you to help you choose the perfect look to convey your message.

CUSTOM COLORS – Bright, clean high-gloss colors, rich metallics, low-gloss earth tones, prismatic special effects and more: If you can imagine a color, we can make it real. Contact customer service to connect with our color experts.



Lumiflon® FEVE, a remarkable second-generation fluoropolymer coating, meets the weatherability and chemical-resistance standards you would expect from PVDF finishes, but delivers unprecedented design and performance advantages – a rich palette of vivid colors, a full gloss range, excellent adhesion, recoatability and even ambient cure capabilities.

	FEVE/Lumiflon®	PVDF/Kynar®
Durability	Meets AAMA 2605	Meets AAMA 2605
Color Range	Bright to Muted	Muted Only
Color Retention	Excellent	Excellent
Gloss Range	30–70	30–40
Gloss Retention	Excellent	Excellent
Chalking Resistance	Excellent	Excellent
Field Touch-Up	Excellent	Poor
Marring Resistance	Excellent	Good

For additional information, samples or a list of ALPOLIC® fabricators, please call 1-800-422-7270 or visit www.alpolic-americas.com.

ALPOLIC®
M A T E R I A L S

Let's Build

MITSUBISHI CHEMICAL COMPOSITES AMERICA, INC.

401 Volvo Parkway, Chesapeake, VA 23320
Telephone: 800-422-7270 | Facsimile: 757-436-1896
www.alpolic-americas.com | e-mail: info@alpolic.com

Mitsubishi Chemical Composites America, Inc. reserves the right to change or delete information herein without prior notice.

©2017 Mitsubishi Chemical Composites America, Inc. All rights reserved. ALPOLIC® is a registered trademark of Mitsubishi Chemical Corporation. Lumiflon® is a registered trademark of Asahi Glass Company. Kynar® is a registered trademark of Arkema, Inc.

LITAP3000 Rev.17
March 2017



BUILD YOURS WITH ALPOLIC® COLORS AND FINISHES

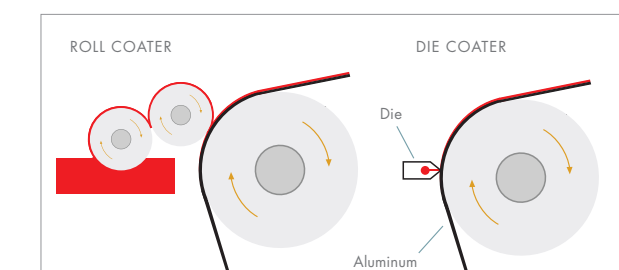
ALPOLIC®
M A T E R I A L S

Let's Build

Choose the Highest Standard of Quality, Durability and Beauty

HIGH-PERFORMANCE FLUOROPOLYMER RESINS – Our Lumiflon® FEVE and Kynar® PVDF resins are the most advanced architectural coatings available, meeting or exceeding AAMA 2605 specifications to deliver superior durability, weatherability and chemical resistance. Choose Lumiflon® FEVE for the broadest color palette with a gloss range from satin to high luster. This remarkable finish can also be touched up with an air-dry system.

SHORT RUN CAPABILITIES – With our advanced die coating process and controlled curing, we can coil coat as little as 1,000 square feet of material in a broad choice of colors. You can count on the same color consistency, quality and lengthy warranty we offer for the largest orders. Gain practically unlimited design flexibility, thanks to our ability to deliver short runs of custom colors in your choice of 40-, 50- or 62-inch widths.

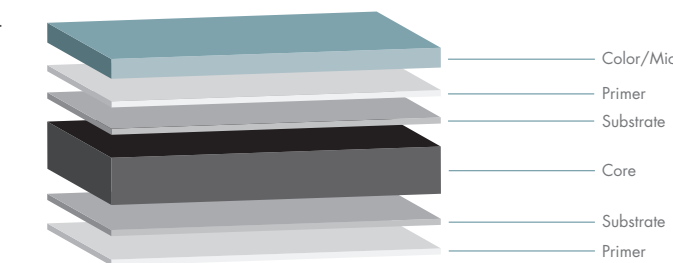


DIE COATING VS. ROLL COATING
Although widely used roll coaters can achieve adequate quality and efficiency, our advanced die coaters permit direct coating on the aluminum surface to ensure smoother, finer finishes without roping marks.

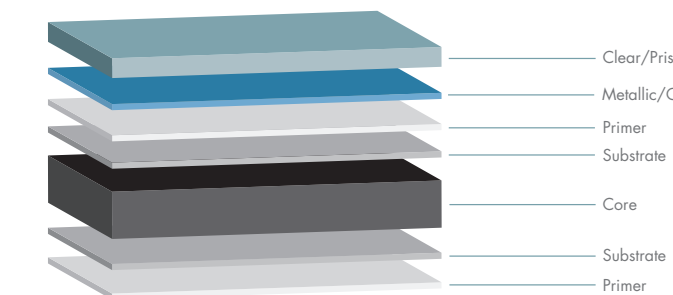
GLOSS RANGE – Different gloss levels can significantly change the eye’s perception of color. If you would like a different gloss level than the sample you submit for color matching, let us know. We will work with you directly to ensure the gloss level you want is achieved.

FINISH DIRECTIONALITY – For best color consistency, maintain the same directionality throughout design, estimation, fabrication and construction. We recommend ordering finishes for your entire job at one time, from one lot of material.

2 Coat Solid/Mica



3 Coat Metallic/Prismatic



LIGHT REFLECTANCE VALUE – LRV numbers indicate the percentage of visible light reflected by the surface. This value is defined in ASTM C609 as the Y value in an XYZ/Yxy color space. While the LRV values shown on this chart are typical, there can be slight variations between individual lots.

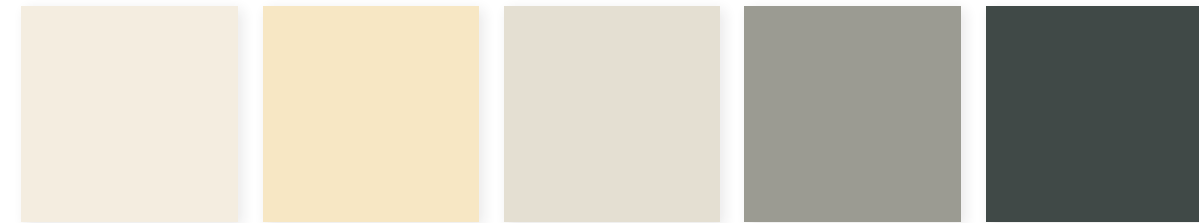
SOLAR REFLECTANCE INDEX – SRI numbers, as defined by ASTM E1980 using 12 W/m2K values, indicate the material’s reflectivity (how well it reflects back instead of absorbing radiant energy) and emissivity (how well it radiates absorbed heat back into the environment). The Cool Roof Rating Council (CRRCC) requires an SRI value of 29 or greater for steep-slope roofs to earn a “Cool” rating. Most of our Architectural stock colors meet this requirement, and we have added “Cool” after the SRI value for easy reference.

For expert assistance with product availability, material selection, sizing and colors, please contact your local ALPOLIC® sales office.

30 Year Finish Warranty Stock Colors

Stocked in 4mm thick panels

SOLID



Bone White 4-BNT-30 LRV 78.50/SRI 82-Cool
Oyster 4-CRT-30 LRV 72.46/SRI 82-Cool
Mist White 4-MST-30 LRV 69.96/SRI 75-Cool
Aluminum Grey 4-AGT-30 LRV 31.60/SRI 26
BGY Grey 4-BGY-50 LRV 10.41/SRI 7



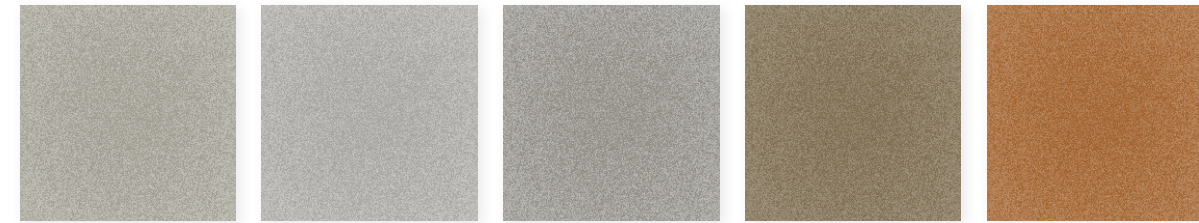
Bronze 4-JBR-30 LRV 3.34/SRI 2
TOB Black 4-TOB-15 LRV 1.01/SRI 0

MICA



Mica Platinum 4-OPT-50 LRV 30.88/SRI 53-Cool
Mica Anodic Clear 4-MNC-30 LRV 34.43/SRI 56-Cool
Mica Champagne 4-MCU-30 LRV 22.61/SRI 38-Cool
Mica Grey 4-MZG-50 LRV 7.95/SRI 14
Mica MFS Grey 4-MFS-30 LRV 13.41

METALLIC



BSX Silver Metallic 4-BSX-30 LRV 30.94/SRI 71-Cool
Silver Metallic 4-SMX-30 LRV 36.59/SRI 63-Cool
Champagne Metallic 4-CMX-30 LRV 31.19/SRI 59-Cool
Medium Bronze Metallic 4-MBX-30 LRV 31.20/SRI 40-Cool
Dark Copper Metallic 4-DCX-30 LRV 15.09/SRI 47-Cool

*Colors shown are as close to actual colors as allowed by the printing process. Mitsubishi Chemical Composites America, Inc. reserves the right to change or delete information herein without prior notice. Please refer to warranty details for exclusions and limitations. Additional warranty coverage may be given to some projects/products. Please call 800.422.7270 for more information.

20 Year Finish Warranty Stock Colors

Stocked in 4mm unless otherwise stated

SOLID



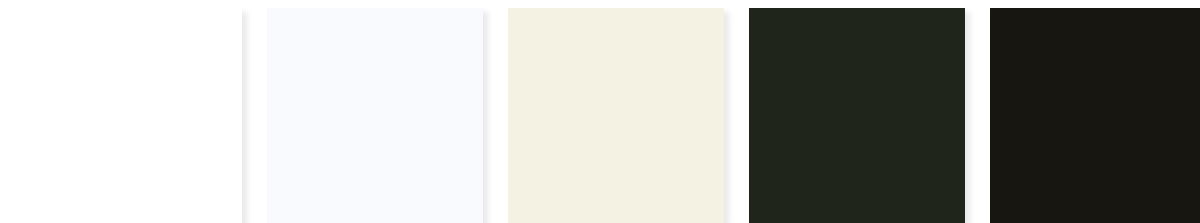
BBR Red 4-BBR-30 LRV 8.06 3&4mm
BTR Red 4-BTR-50 LRV 11.57 3&4mm
TOR Red 4-TOR-70 LRV 9.06
JLR Red 4-JLR-50 LRV 5.44
JXR Red 4-JXR-30 LRV 10.50



TRC Red 4-TRC-30 LRV 8.52
AUB Blue 4-AUB-50 LRV 3.25
CVB Blue 4-CVB-70 LRV 13.79
HNB Blue 4-HNB-50 LRV 16.78
RTB Blue 4-RTB-60 LRV 9.06



MBU Blue 4-MBU-30 LRV 10.59
HYB Blue 4-HYB-30 LRV 4.20
ABE Blue 4-ABE-70 LRV 23.73
AYW Yellow 4-AYW-70 LRV 61.77
HYE Yellow 4-HYE-50 LRV 62.5



RVW White 4-RVW-G50 LRV 86.34
HWH White 4-HWH-50 LRV 80.8
COW White 4-COW-30 LRV 68.67
BLX Black 4-BLX-30 LRV 0.89 3&4mm
TBL Black 4-TBL-70 LRV 0.75 3&4mm

SOLID



CVG Grey 4-CVG-50 LRV 14.38 3&4mm
PEX Pewter Metallic 4-PEX-30 LRV 20.63
TSZ Silver Metallic 4-TSZ-70 LRV 32.00
TBX Silver Metallic 4-TBX-30 LRV 38.75 3&4mm

*Colors shown are as close to actual colors as allowed by the printing process. Mitsubishi Chemical Composites America, Inc. reserves the right to change or delete information herein without prior notice. Please refer to warranty details for exclusions and limitations. Additional warranty coverage may be given to some projects/products. Please call 800.422.7270 for more information.

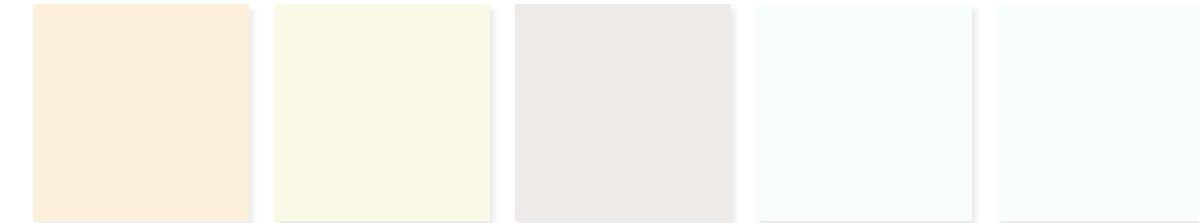
10 Year Finish Warranty Stock Colors

Stocked in 3mm thick panels

SOLID



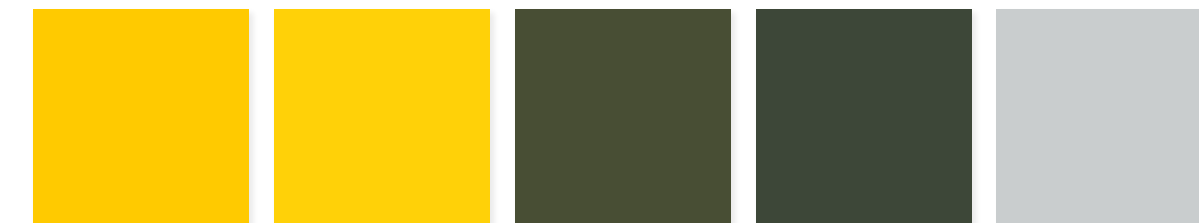
STR Red 3-STR-70 LRV 12.55
TRD Red 3-TRD-70 LRV 10.26
FEF Red 3-FEF-70 LRV 11.64
BPS Pearl 3-BPS-30 LRV 68.79
ETT Tan 3-ETT-30 LRV 47.87



CRY Oyster 3-CRY-50 LRV 72.30
CTW White 3-CTW-30 LRV 76.42
MCV White 3-MCV-70 LRV 68.21
SAW White 3-SAW-70 LRV 80.62
EWH White 3-EWH-70 LRV 90.01



DYB Blue 3-DYB-50 LRV 10.06
CFB Blue 3-CFB-70 LRV 7.24
SHB Blue 3-SHB-70 LRV 4.12
BGN Green 3-BGN-50 LRV 14.39
BYL Yellow 3-BYL-50 LRV 65.93



EYL Yellow 3-EYL-30 LRV 48.05
YLW Yellow 3-YLW-50 LRV 49.88
SBR Bronze 3-SBR-30 LRV 6.32
CNC Charcoal 3-CNC-30 LRV 4.20
SOG Grey 3-SOG-70 LRV 49.50

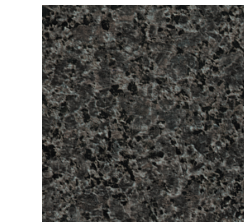


TXG Grey 3-TXG-70 LRV 40.69

*Colors shown are as close to actual colors as allowed by the printing process. Mitsubishi Chemical Composites America, Inc. reserves the right to change or delete information herein without prior notice. Please refer to warranty details for exclusions and limitations. Additional warranty coverage may be given to some projects/products. Please call 800.422.7270 for more information.

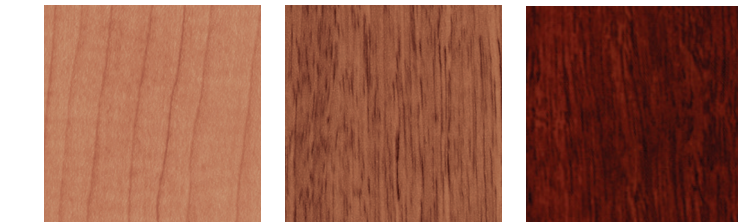
Specialty Stock Colors/Finishes

STONE SERIES | 20 Year Finish Warranty



Black Granite 4-LBG-70 LRV N/A

TIMBER SERIES | 20 Year Finish Warranty



Maple 4-MPL-30 LRV N/A
Walnut 4-WLN-30 LRV N/A
Mahogany 4-GAE-30 LRV N/A

PRISMATIC



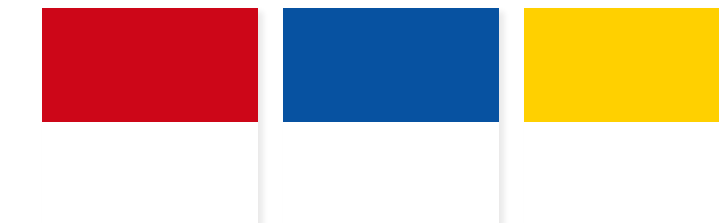
MRT Prismatic Magma 10 Year Finish Warranty 3-MRT-70 LRV 11.33
DGO Pearlescent Orange 10 Year Finish Warranty 3-DGO-70 LRV 22.21

DECORATIVE



HPA High Polished Aluminum 5 Year Finish Warranty 3-HPA-70 LRV 0.88
HLZ Hairline Aluminum 10 Year Finish Warranty 4-HLZ-70 LRV 16.32

MULTI-COLOR

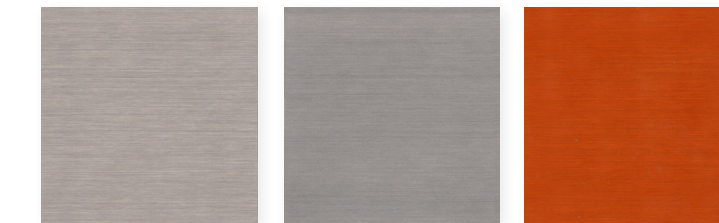


Red/White 10 Year Finish Warranty 3-209-70 LRV 11.64/SRI 80.90
Blue/White 10 Year Finish Warranty 3-207-70 LRV 8.00/SRI 81.04
Yellow/White 10 Year Finish Warranty 3-234/238-35 LRV 48.05/SRI 90.01

Architectural Premium Stock Finishes

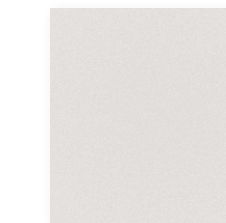
Call ALPOLIC® Customer Service for Warranty Details 800.422.7270

NATURAL METALS



Stainless 4-4HL 3-TXG-70 LRV 21.84/SRI 34-Cool
Zinc 4-AZZ LRV 21.51/SRI 0
Copper 4-C12 LRV 5.03/SRI 55-Cool

ANODIZED



Clear 4-CLR LRV 34.31/SRI 84-Cool

*Colors shown are as close to actual colors as allowed by the printing process. Mitsubishi Chemical Composites America, Inc. reserves the right to change or delete information herein without prior notice. Please refer to warranty details for exclusions and limitations. Additional warranty coverage may be given to some projects/products. Please call 800.422.7270 for more information.